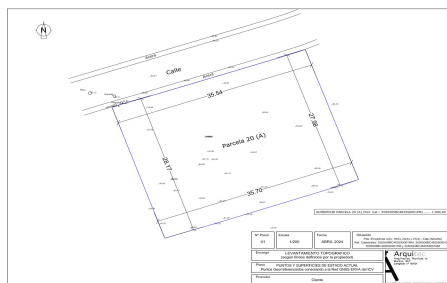
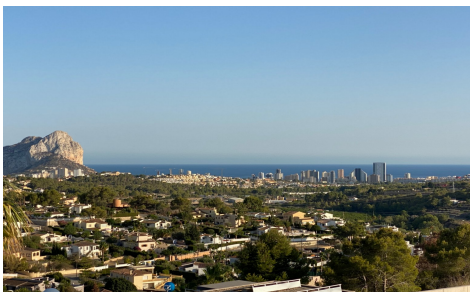


UP68125Z



Land a Plots in Calpe

€420,000



0



0



N/A


1,005m²


N/A

Offering stunning sea views, this plot of land is located in Calpe's Partida Empedrola II, spanning 1005 m2. Water and electricity connections are readily available, along with centralized drainage and street lighting. Situated facing south, the property boasts breathtaking views of the sea, Peñón de Ifach, and the mountains. The plot is well-maintained and ready for development.